

€3,295,000 House / Villa - For sale

## Stunning 6-bedroom 950 m<sup>2</sup> detached villa of unique design in Valdemarin, Madrid

Spain » Madrid » Aravaca » 28023

<b>6</b>	<b>7</b>	<b>982m<sup>2</sup></b>	<b>2,560m<sup>2</sup></b>
Bedrooms	Bathrooms	Built size	Plot size



Contact us today for more information or to arrange a viewing

+34 699 095 185 • [pozuelo@lucasfox.es](mailto:pozuelo@lucasfox.es) • [lucasfox.com](http://lucasfox.com) • Avda. de Europa 38, Pozuelo de Alarcón, Spain

€3,295,000 House / Villa - For sale

## Stunning 6-bedroom 950 m<sup>2</sup> detached villa of unique design in Valdemarin, Madrid

Spain » Madrid » Aravaca » 28023

**6** Bedrooms      **7** Bathrooms      **982m<sup>2</sup>** Built size      **2,560m<sup>2</sup>** Plot size

### OVERVIEW

**Unique detached villa of 950 m<sup>2</sup> of exceptional design with landscaped garden, pool, independent summer porch and padel court, in an exclusive location in Valdemarin, Madrid.**

Lucas Fox is proud to present a very special property of exceptional design by award-winning architect Gabriel Allende.

This wonderful 6-bedroom detached villa on a perfect plot of almost 2,600 m<sup>2</sup> is located in an exclusive area of Valdemarin, where residents enjoy an outdoors lifestyle at only 10 minutes' drive from central Madrid.

The area is always in high demand because of the numerous prestigious (international) schools on offer, including Mater Salvatoris, The American School of Madrid, International Aravaca and The English Montessori School.

This family home of 950 m<sup>2</sup> stands out for its unique design, quality of construction, the abundance of light throughout all quarters and its fantastic garden with a pool and independent porch which serves as a semi-outdoors living and dining room.

We enter the property through an impressive double height ceiling entrance hall which divides the home in two wings. Turning left we find a large double height ceiling living room with several seating areas and benefiting from large windows with pleasant views to both the front and the back garden.

Turning right from the entrance hall we step into a hall which gives us access to another lounge / TV room, a dining room, a guest toilet and at the far end we find the fully equipped kitchen with separate informal breakfast room, a large pantry and a laundry room. The service bedroom and bathroom and conveniently located adjacent to the kitchen.

The first floor can be reached by staircases in both wings or one can take the lift which serves all three floors. On this floor we find the family's sleeping quarters: the master bedroom has its ensuite bathroom, a large dressing room, and its double height ceiling allows for an office at the duplex level. There are 4 more bedrooms of identical size on this level, two of which have ensuite bathrooms and the other two share one full bathroom. This level is completed by a small living / study room.



[lucasfox.com/go/poz23882](https://lucasfox.com/go/poz23882)

Garden, Swimming pool, Tennis court, Private garage, High ceilings, Marble flooring, Natural light, Parking, Air conditioning, Alarm, Built-in wardrobes, Chill out area, Double glazing, Equipped Kitchen, Exterior, Fireplace, Heating, Library, Near international schools, Pet-friendly, Service entrance, Storage room, Transport nearby, Utility room, Walk-in wardrobe

**Contact us today for more information or to arrange a viewing**

+34 699 095 185 • [pozuelo@lucasfox.es](mailto:pozuelo@lucasfox.es) • [lucasfox.com](https://lucasfox.com) • Avda. de Europa 38, Pozuelo de Alarcón, Spain



€3,295,000 House / Villa - For sale

## Stunning 6-bedroom 950 m<sup>2</sup> detached villa of unique design in Valdemarin, Madrid

Spain » Madrid » Aravaca » 28023

<b>6</b>	<b>7</b>	<b>982m<sup>2</sup></b>	<b>2,560m<sup>2</sup></b>
Bedrooms	Bathrooms	Built size	Plot size

The basement hosts a gym, complete with its own bathroom, sauna and steam room. A cosy cinema room with a big screen, a wine cellar and a garage for 6 cars complete this level.

The garden stands out for its meticulous landscaping and has a large pool with a lovely wooden bridge as a special feature. On the right side of the pool we find a spacious covered porch with sliding glass doors which can be completely closed, offering an independent summer living and dining room. The garden is completed by a padel court.

In summary, Lucas Fox Pozuelo & Aravaca is pleased to offer this unique property in excellent condition for sale. Its location, garden and fantastic layout will appeal to families looking for space whilst being in very close proximity to central Madrid.

Please contact us today by email or phone to organise a viewing. We facilitate access when it suits you, 7 days per week, including evenings.

Alternatively please visit us in our recently opened our Lucas Fox property lounge at Avenida de Europa 38, in Pozuelo to discuss your requirements in person so we can help you find your perfect home or investment.

**Contact us today for more information or to arrange a viewing**

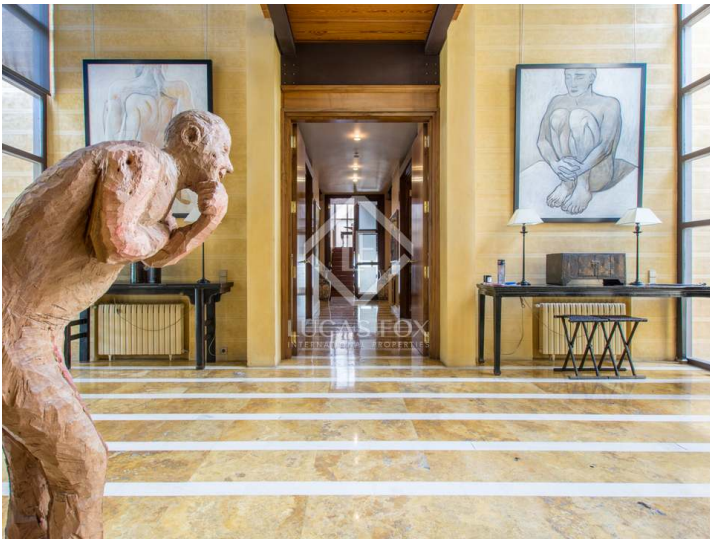
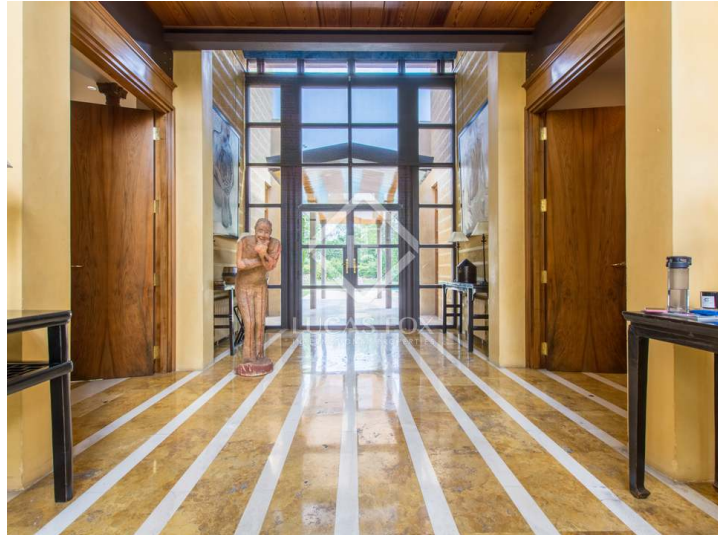
+34 699 095 185 • [pozuelo@lucasfox.es](mailto:pozuelo@lucasfox.es) • [lucasfox.com](http://lucasfox.com) • Avda. de Europa 38, Pozuelo de Alarcón, Spain

€3,295,000 House / Villa - For sale

## Stunning 6-bedroom 950 m<sup>2</sup> detached villa of unique design in Valdemarin, Madrid

Spain » Madrid » Aravaca » 28023

**6** Bedrooms      **7** Bathrooms      **982m<sup>2</sup>** Built size      **2,560m<sup>2</sup>** Plot size



Important Information relating to properties offered by Lucas Fox. Any property particulars are not an offer or contract, nor part of one. You should not rely on statements by Lucas Fox in the particulars or by word of mouth or in writing as being factually accurate about the property, its condition or its value. Neither Lucas Fox nor any associated agent has any authority to make any representations about the property, and accordingly any information given is entirely without responsibility on the part of the agents, seller(s) or lessor(s). Prior the signature of any document concerning the property we recommend that all purchasers consult an independent lawyer and if necessary carry out a survey of the property to ascertain condition / measurements. Areas, measurements and distances given are approximate only and should be checked by the purchaser.

**Contact us today for more information or to arrange a viewing**

+34 699 095 185 • [pozuelo@lucasfox.es](mailto:pozuelo@lucasfox.es) • [lucasfox.com](http://lucasfox.com) • Avda. de Europa 38, Pozuelo de Alarcón, Spain