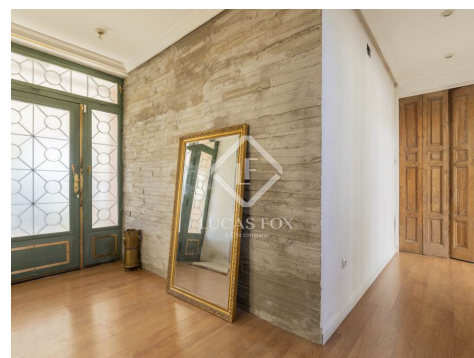


€1,350,000 House / Villa - Sold

## Fantastic detached villa with south orientation in the heart of Las Lomas, Boadilla del Monte

Spain » Madrid » Boadilla del Monte » 28660

<b>5</b>	<b>5</b>	<b>650m<sup>2</sup></b>	<b>2,658m<sup>2</sup></b>	<b>2,300m<sup>2</sup></b>
Bedrooms	Bathrooms	Floorplan	Plot size	Garden



**Contact us today for more information or to arrange a viewing**

+34 699 095 185 • [pozuelo@lucasfox.es](mailto:pozuelo@lucasfox.es) • [lucasfox.com](http://lucasfox.com) • Avda. de Europa 38, Pozuelo de Alarcón, Spain

€1,350,000 House / Villa - Sold

## Fantastic detached villa with south orientation in the heart of Las Lomas, Boadilla del Monte

Spain » Madrid » Boadilla del Monte » 28660

<b>5</b>	<b>5</b>	<b>650m<sup>2</sup></b>	<b>2,658m<sup>2</sup></b>	<b>2,300m<sup>2</sup></b>
Bedrooms	Bathrooms	Floorplan	Plot size	Garden

### OVERVIEW

## Stunning south-facing detached villa for sale in the heart of Las Lomas, Boadilla del Monte

Lucas Fox is proud to present this unique investment opportunity in the heart of Las Lomas, in Boadilla del Monte.

We are facing an independent villa , with optimal privacy and security, with an excellent location in a dead- access street. The property, completely oriented to the south, offers wonderful exterior and interior spaces, with rooms that receive abundant natural light, thanks to its large windows. Due to its great renovation potential, it offers many possibilities for the new owners to customize it to their taste and needs.

When accessing the plot, we first find the parking area, with a comfortable path that leads us to the door with a practical roundabout for vehicles for daily use or visits.

The villa is distributed over two comfortable floors. When crossing the threshold of the door, the lobby is arranged. On the right hand side, there is a large separate kitchen with utility room and direct access to the garden. Next, in this wing, we find a double bedroom and a complete bathroom . The left wing has been used for the master suite with its fireplace, full bathroom and two walk-in closets.

At the end, we come to the large living-dining room, which is the result of an extension. Currently it offers infinite possibilities of use or layout. All this area benefits from large windows and south-facing, which guarantees a pleasant feeling of comfort every day of the year. In this area we also have two offices or studios and a wonderful indoor spa, made up of a counter-current swimming pool and a bubble bench.

The upper floor has been dedicated exclusively to the rest of the family. In it there are three other large bedrooms, two of them with a terrace and one of them with a private bathroom; and another bathroom to share. There is also the possibility of expanding this floor by forging the living room, which is already prepared.



[lucasfox.com/go/poz40477](https://lucasfox.com/go/poz40477)

Terrace, Swimming Pool, Indoor swimming pool, Heated swimming pool, Garden, Spa, Jacuzzi, Gym, Natural light, Parking, Walk-in wardrobe, Views, Transport nearby, Storage room, Service entrance, Security, Playroom, Playground, Panoramic view, Near international schools, Home cinema, Heating, Gourmet lounge, Fireplace, Exterior, Equipped Kitchen, Chill out area, Central vacuum system, Built-in wardrobes, Barbecue, Balcony, Alarm, Air conditioning

**Contact us today for more information or to arrange a viewing**

+34 699 095 185 • [pozuelo@lucasfox.es](mailto:pozuelo@lucasfox.es) • [lucasfox.com](https://lucasfox.com) • Avda. de Europa 38, Pozuelo de Alarcón, Spain

€1,350,000 House / Villa - Sold

## Fantastic detached villa with south orientation in the heart of Las Lomas, Boadilla del Monte

Spain » Madrid » Boadilla del Monte » 28660

<b>5</b>	<b>5</b>	<b>650m<sup>2</sup></b>	<b>2,658m<sup>2</sup></b>	<b>2,300m<sup>2</sup></b>
Bedrooms	Bathrooms	Floorplan	Plot size	Garden

The exterior is impressive, with a large garden that has an exclusive beach-entry pool and a barbecue area, making it a perfect place to entertain during the warmer months of the year. The garden is large enough to offer privacy and allow children to play and enjoy the outdoors without worry. In addition, due to its regular shape and layout, it is one of the most privileged plots in the development.

In Las Lomas we can find nearby shopping areas such as Avenida Infante Don Luis, just a few minutes away, as well as the educational centers St. Michael's School and the Mirabal school, among other offers.

It is located near Majadahonda and enjoys excellent road communications (M-500, M-501), public transport (bus, Cercanías and Light Rail), good social and health facilities (Puerta de Hierro hospital, Montepíncipe hospital) and shopping centers (Gran Plaza 2 or the Equinox).

Contact Lucas Fox today by phone or email to arrange a viewing. We work seven days a week to adapt to the needs of our clients. You can also visit us at our Lucas Fox Lounge on Avenida de Europa, 38 in Pozuelo de Alarcón. So we can analyze your needs in more detail and help you find the perfect home or investment.

**Contact us today for more information or to arrange a viewing**

+34 699 095 185 • [pozuelo@lucasfox.es](mailto:pozuelo@lucasfox.es) • [lucasfox.com](http://lucasfox.com) • Avda. de Europa 38, Pozuelo de Alarcón, Spain



€1,350,000 House / Villa - Sold

## Fantastic detached villa with south orientation in the heart of Las Lomas, Boadilla del Monte

Spain » Madrid » Boadilla del Monte » 28660

<b>5</b>	<b>5</b>	<b>650m<sup>2</sup></b>	<b>2,658m<sup>2</sup></b>	<b>2,300m<sup>2</sup></b>
Bedrooms	Bathrooms	Floorplan	Plot size	Garden



Important Information relating to properties offered by Lucas Fox. Any property particulars are not an offer or contract, nor part of one. You should not rely on statements by Lucas Fox in the particulars or by word of mouth or in writing as being factually accurate about the property, its condition or its value. Neither Lucas Fox nor any associated agent has any authority to make any representations about the property, and accordingly any information given is entirely without responsibility on the part of the agents, seller(s) or lessor(s). Prior the signature of any document concerning the property we recommend that all purchasers consult an independent lawyer and if necessary carry out a survey of the property to ascertain condition / measurements. Areas, measurements and distances given are approximate only and should be checked by the purchaser.

**Contact us today for more information or to arrange a viewing**

+34 699 095 185 • [pozuelo@lucasfox.es](mailto:pozuelo@lucasfox.es) • [lucasfox.com](http://lucasfox.com) • Avda. de Europa 38, Pozuelo de Alarcón, Spain